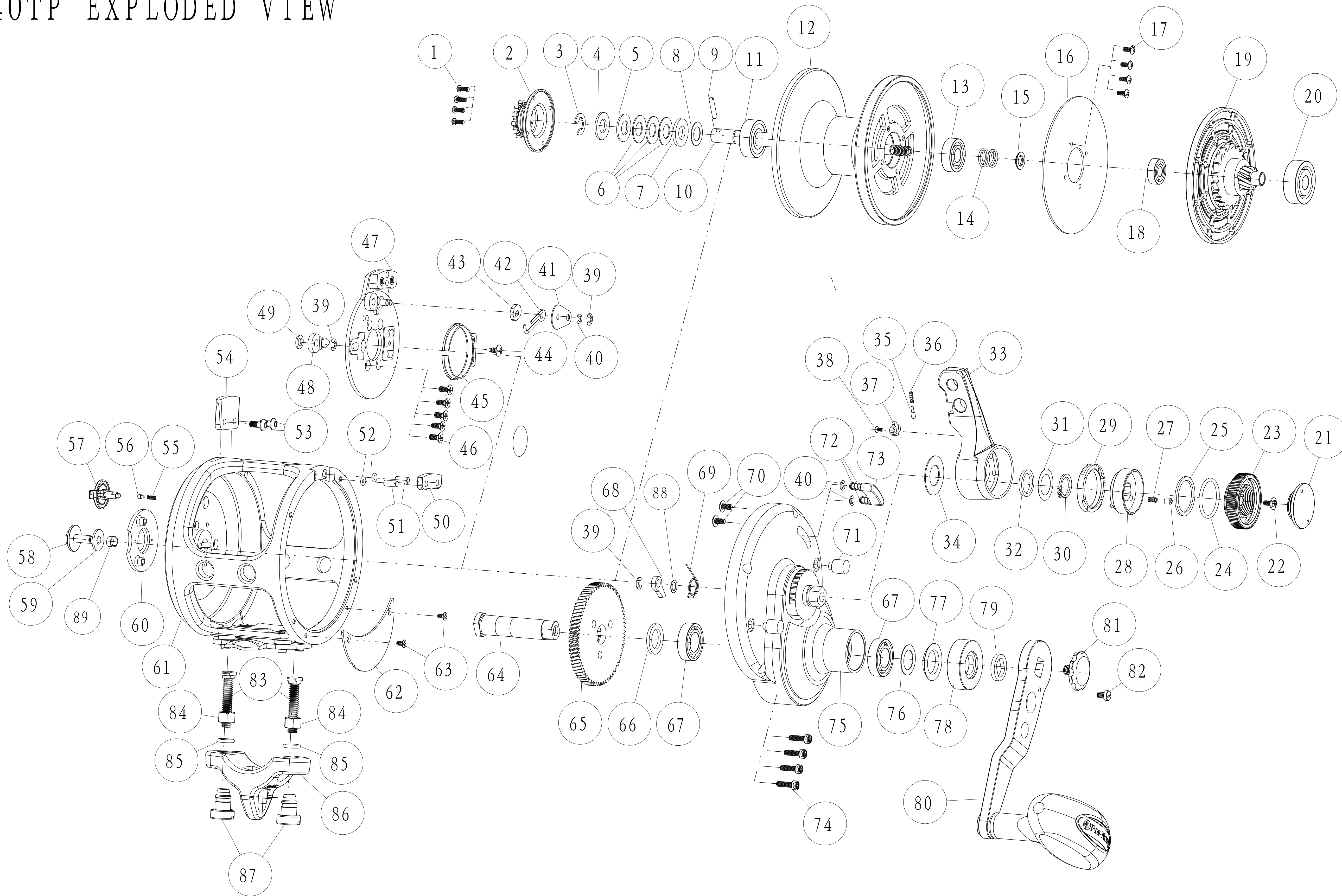


# MA40TP EXPLODED VIEW



DOC. NO. -REV.  
GM300-20A

**WARNING:** Cancer and Reproductive Harm – [www.P65Warnings.ca.gov/products](http://www.P65Warnings.ca.gov/products)

DIMENSIONS AND TOLERANCES PER ISO DO NOT SCALE DRAWING		TOLERANCES EXCEPT AS NOTED ANGLES TOLERANCE OTHERS FOR PROCESS STANDARD ALL DIM. ARE IN MILLIMETERS		W.C. BRADLEY / ZEBCO HOLDINGS, INC P.O. BOX 270 TULSA, OKLAHOMA	
PROPRIETARY NOTICE FOR DOCUMENTS This document and the information therein is the confidential property of ZEBCO Corporation. Reproduction or use of this document or the information herein for any purpose without the express written consent of ZEBCO Corporation is strictly prohibited.				PART NAME	
NOTATION SYMBOLS		REV. BY	DATE	4/11/2013	
Flatness	Perpendicularity	REV. BY	DATE	4/11/2013	
Roundness	Angularity	REV. NO.		GM300-20	
Circular Runout	Surface Texture	SCALE		1:1.000	
Profile	True Position	SHEET		1 OF 1	
Line Profile	Concentricity	REV. NO.		GM300-20A	
Parallelism	Runout				

## FinNor Marquesa Pelagic Lever Drag - MA40TP

Key No.	Part Name	Quantity	Part No	Key No.	Part Name	Quantity	Part No
1	Screw	4	LF057-01	45	Click Spring	1	DF022-01
2	Bait Click Ratchet Assembly	1	GM329-01	46	Screw	5	TW107-04
3	E-Ring	1	DF092-01	47	Click Plate Holder	1	CM129-01
4	Collar	1	DF081-02	48	Bait Click Pawl	1	DF109-02
5	Drag Spring	1	JF046-01	49	Bait Click Lever Washer -B	1	CF035-01
6	Drag Spring	3	CM046-01	50	Harness Lug Spacer - Right	1	CM160-02
7	Collar	1	DF081-01	51	Pin	2	CM093-01
8	Washer	1	CF121-01	52	O-Ring	2	CM101-01
9	Spool Shaft Pin	1	DF093-01	53	Screw	2	CM123-01
10	Spool Shaft	1	CM015-01	54	Harness Lug Spacer - Left	1	DM160-02
11	Ball Bearing	1	VF017-02	55	Coil Spring	1	DF070-01
12	Spool	1	CM021-02	56	Testion Konb Click Pin	1	CF108-01
13	Ball Bearing	1	KF017-01	57	Tension Knob	1	CF026-01
14	Spring	1	CF040-01	58	Bait Click Lever	1	CF109-01
15	Collar	1	BF094-01	59	Bait Click Lever Washer -A	1	CF032-01
16	Drag Disc	1	CM059-01	60	Badge	1	CF148-03
17	Screw	1	CM057-01	61	Frame Assembly	1	CM301-03
18	Ball Bearing	1	CF117-02	62	Drive Gear Cover	1	CM143-01
19	Drag Plate Assembly	1	CM348-01	63	Screw	2	CF107-01
20	Ball Bearing	1	JF017-01	64	Crank Shaft	1	GM008-01
21	Pre Set Knob Cover	1	CF110-02	65	Drive Gear	1	GM012-01
22	Screw	1	CX076-04	66	Washer	1	GM035-01
23	Pre Set Knob	1	CF029-04	67	Ball Bering	2	CF017-02
24	O-Ring	1	CF101-01	68	Anti Reverse Pawl	1	DF063-02
25	Friction Washer	1	DF121-01	69	Stopper Spring	1	CF096-01
26	Click Pin	1	CF098-01	70	Screw	2	QW123-10
27	Click Spring	1	DF114-01	71	Locating Collar	2	DF118-01
28	Drag Cam B Assembly	1	CF353-01	72	Strike Button Pin Spring	2	CF022-01
29	Drag Cam A	1	DM028-01	73	Strike Button	1	CF062-02
30	External Ring	1	JF075-01	74	Screw	4	CF053-01
31	Adjustment Washer	1	CF038-02	75	Gear Side Cover Assembly	1	CM324-03
32	Bushing	1	DF017-01	76	Adjustment Washer	1	DF035-01
33	Drag Lever	1	CM055-02	77	Rubber Seal	1	CM172-01
34	Drag Lever Washer	1	BM038-01	78	Handle Washer	1	CM054-02
35	Click Pawl	1	CM098-01	79	Spacer	1	AM160-01
36	Click Spring	1	CM114-01	80	Handle Arm Assembly	1	GM318-02
37	Cover	1	CM161-01	81	Handle Nut	1	CF003-01
38	Screw	1	DW107-02	82	Handle Nut Screw	1	CF065-01
39	E-Clip	4	NX092-01	83	Rod Clamping Bolt	2	CF125-01
40	E-Clip	3	NX090-01	84	Nut	2	JF003-01
41	Holder	1	CF159-01	85	O-Ring	2	LF101-01
42	Torsion Spring	1	CF070-01	86	Rod Clamp	1	XF154-01
43	Cam	1	DF028-01	87	Rod Clamp Nut	2	CF161-01
44	Tapping Screw	1	QW125-02				